

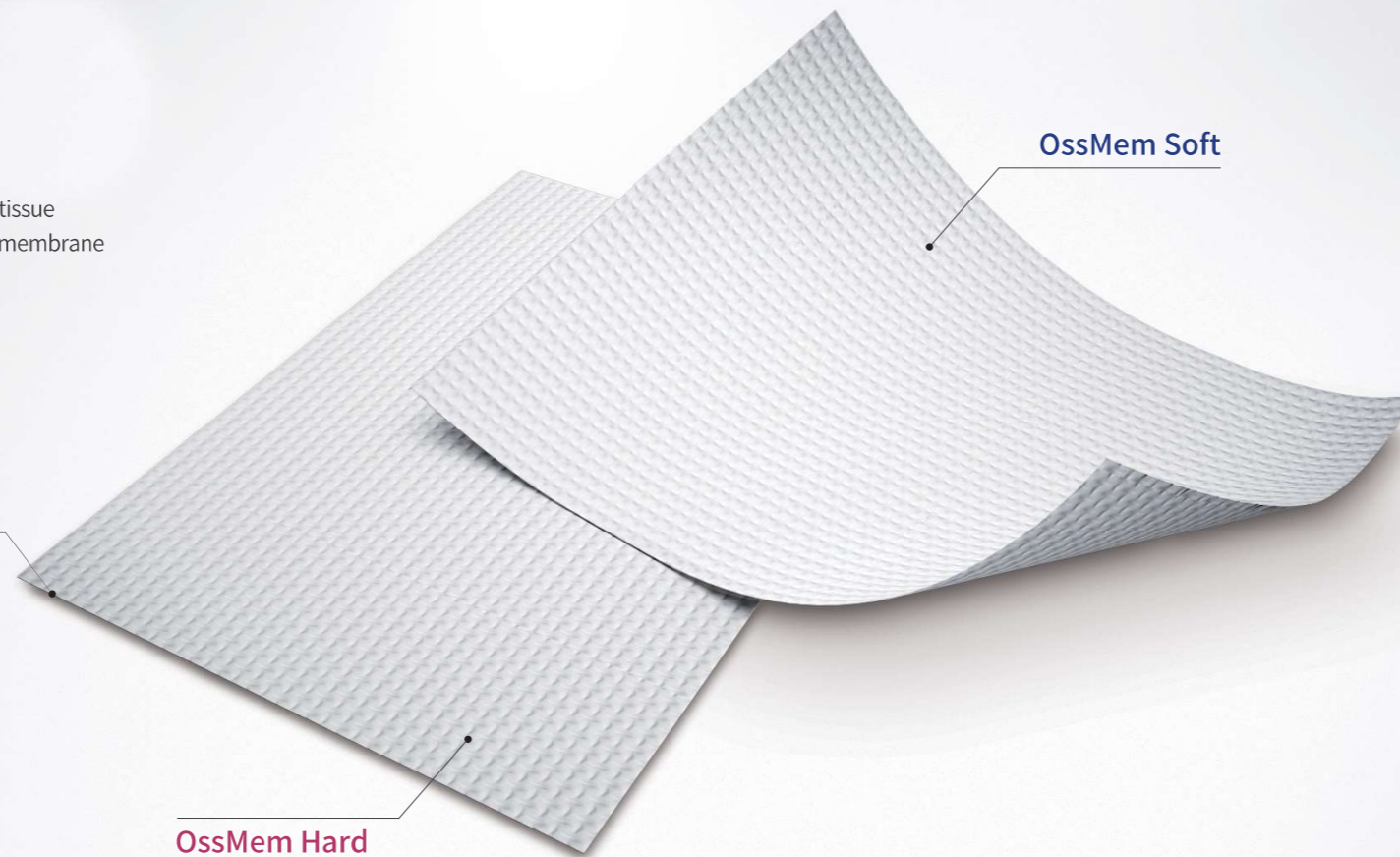
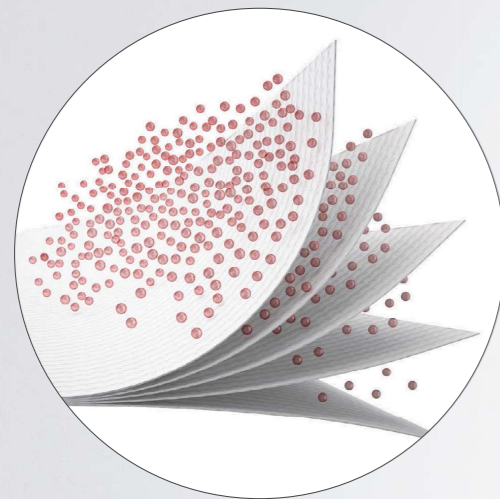
Resorbable Membrane with excellent barrier function for new bone formation

OssMem Soft & Hard

- Stable new bone formation thanks to prevention of Soft Tissue infiltration
- Membrane is safe from inflammation
- Choice of membrane type is selected according to handling preference

Stable new bone formation thanks to prevention of Soft Tissue infiltration

- Dense collagen layers effectively prevent infiltration of soft tissue
- Helps bone regeneration by maintaining a stable shielding membrane

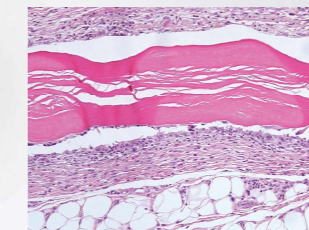


Membrane is safe from inflammation

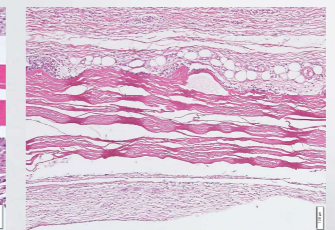
- Use of Safe and High purity New Zealand Type I Collagen
- Safe membrane with "0" inflammatory reaction

Inflammatory Response Grade

- "0" inflammation around the Tissue after Implantation



OssMem Soft



OssMem Hard

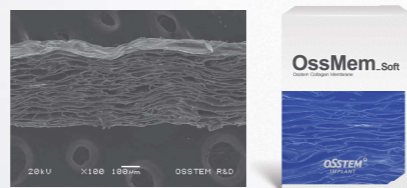
Ref.) Rabbit Calvaria Model, Osstem Implant

Choice of membrane type is selected according to handling preference

- Select Soft Type or Hard Type according to your preferred handling characteristics

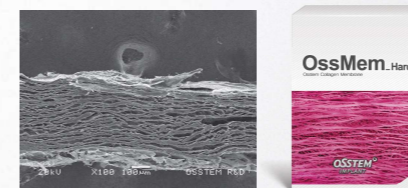
OssMem Soft

- Soft type with soft physical properties
- Excellent ability to settle the wound area
- Resorption period : about 4 months
- Hydration time : 30 seconds



OssMem Hard

- Stiffness maintained even after Hydration
- Excellent packing capacity of bone grafting materials
- Resorption period : about 4 months
- Hydration time : 120 seconds



Specification

Type	W x H (mm)	T (mm)
OssMem Soft / OssMem Hard	15 x 20	0.35
	20 x 30	0.35
	30 x 40	0.35