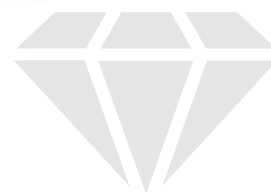


# MICROSS MICROSS *curve*



**Minimally invasive  
single-use device for manual  
cortical bone harvesting**

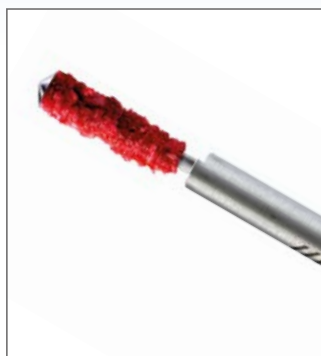


# MICROSS MICROSS *curve*



**MICROSS** is a bone harvesting device specifically designed for surgical techniques that minimize post-operative discomfort.

The exclusive microblade facilitates an excellent cutting performance, making the collection of autologous bone shavings easy. Collect only the bone that is strictly necessary for the defect and minimize invasiveness for your patients.



With its special shape and just 5 mm in diameter, it is designed for a minimally invasive approach and is easy to use even in narrow areas. Making bone harvesting a handy procedure.

## New 27° curvature

The **MICROSS CURVE** ergonomical design allows the user to easily reach retromandibular, palatal and other challenging areas.



<b>Ref. 4049</b>	MICROSS	1 sterile disposable unit, chamber capacity 0.25 cc
<b>Ref. 5489</b>	MICROSS <i>curve</i>	1 sterile disposable unit, chamber capacity 0.25 cc



Art and Innovation in Medical Technology

**META TECHNOLOGIES S.R.L.**  
VIA E. VILLA 7, 42124 REGGIO EMILIA, ITALY  
TEL. +39 0522 502311, FAX +39 0522 502333  
info@metahosp.com, www.metahosp.com

