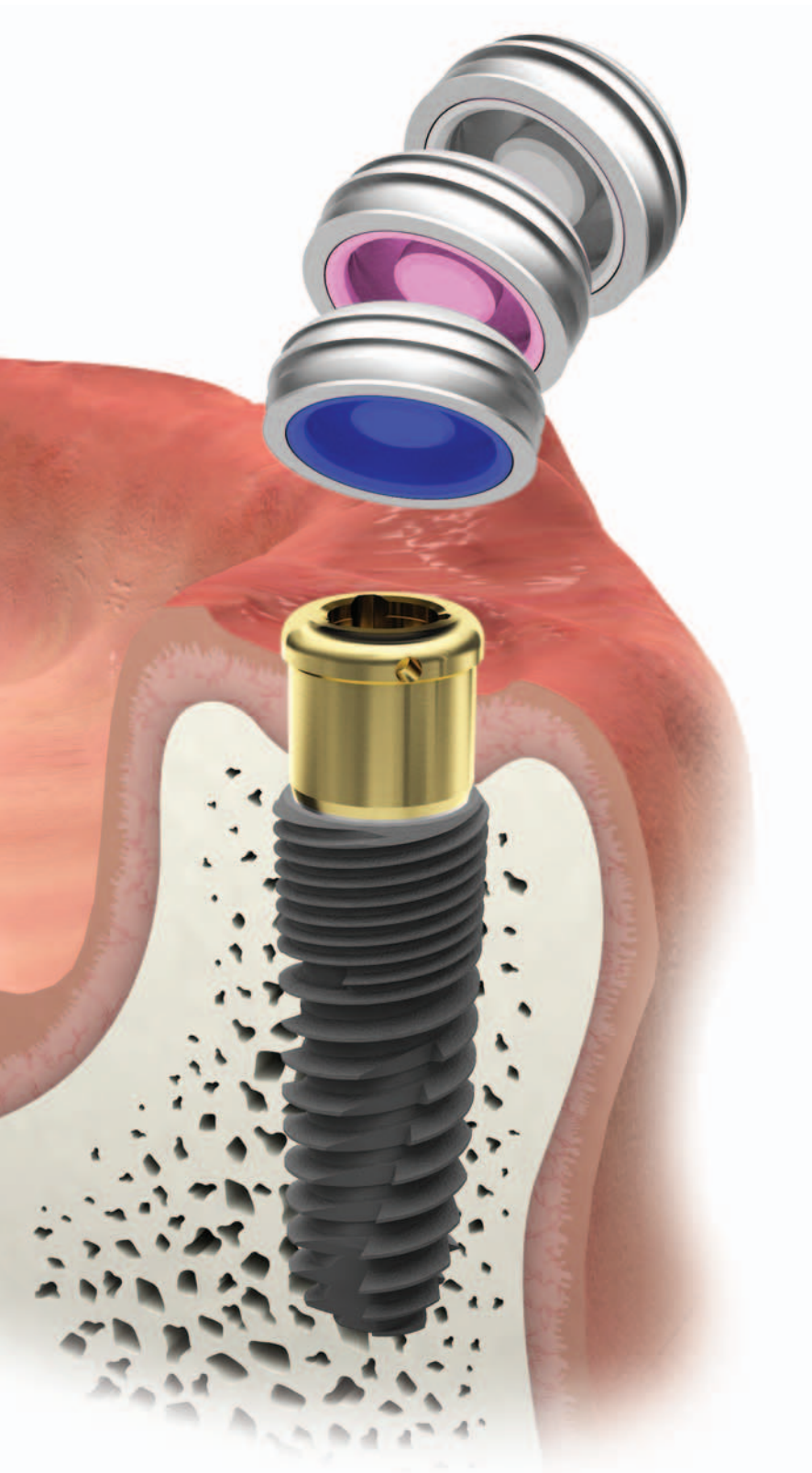


## LOCATOR<sup>®</sup> System

# LOCATOR<sup>®</sup> System



● HIOSSEN LOCATOR® SYSTEM ↙



- **Features**
  - Stable dual retention & optimal holding capabilities against various retention forces (6N, 12N, 22N)
  - Excellent durability
  - Possible denture restorations even at small vertical dimension
  - Accommodate up to 40° divergence between two implants
  - Retention males can be easily placed & removed with core tool
- **Indications**
  - Implant retained overdenture in the mandible or maxilla.
- **Contraindications**
  - Tooth and implant supported overdenture
  - Divergences greater than 40° between two implants.

● HIOSSEN LOCATOR® SYSTEM ↙

| Description           | Component Flow Diagram                          | Tool                 |
|-----------------------|---|----------------------|
| Replacement Male      | <br>0° ~10° divergence      10° ~20° divergence |                      |
| Denture Cap           |   | <br>Core Tool        |
| Black Processing Male |   |                      |
| Lab Analog            |   |                      |
| Impression Coping     |   | <br>Block out spacer |
| Abutment              | <br>HS System      HG System                    | <br>Torque Driver    |
| Fixture               |   |                      |

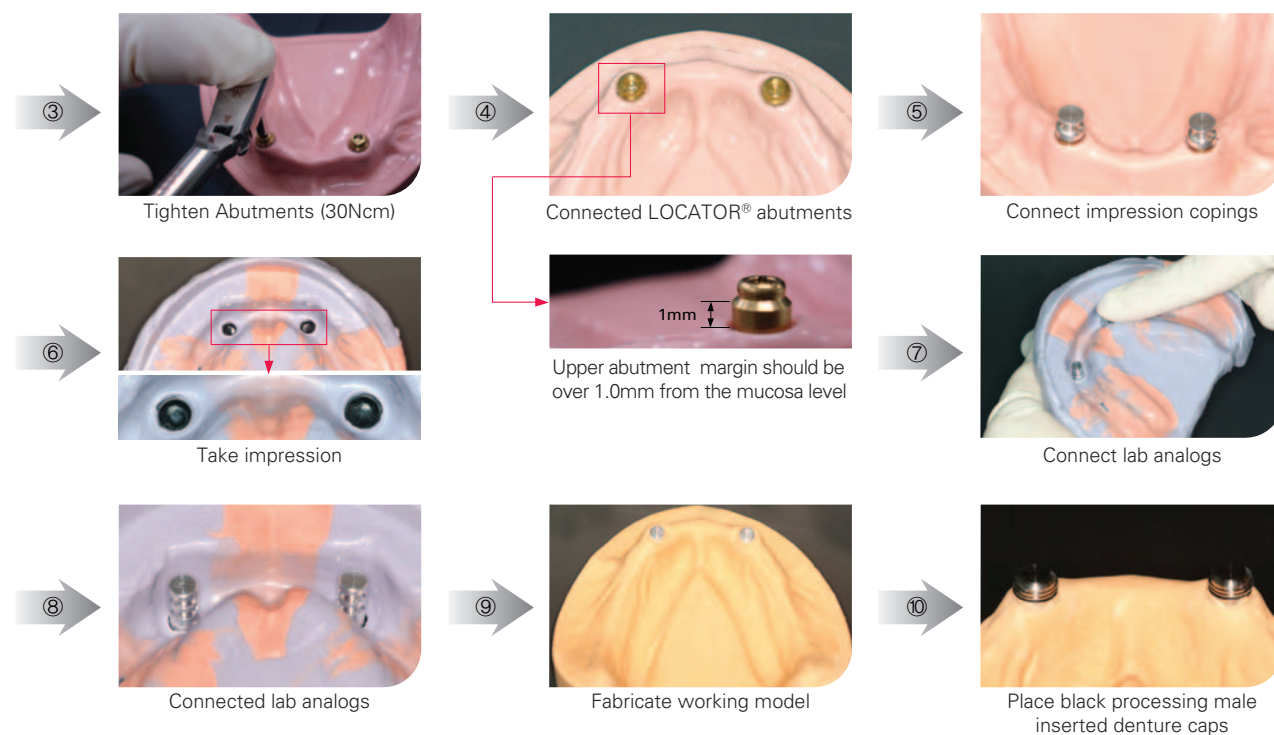


## ● Procedure of LOCATOR® SYSTEM

### ■ Fabricating individual tray

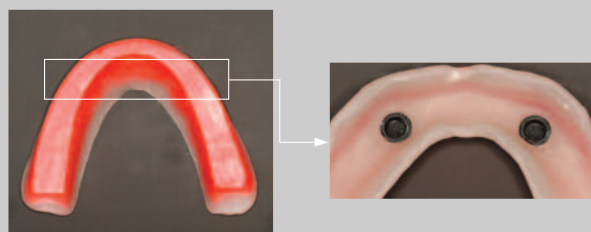


### ■ Taking impression & Fabricating working model



#### Note

- During wax rim fabrication, use denture cap with black processing male for retention on bite registration.



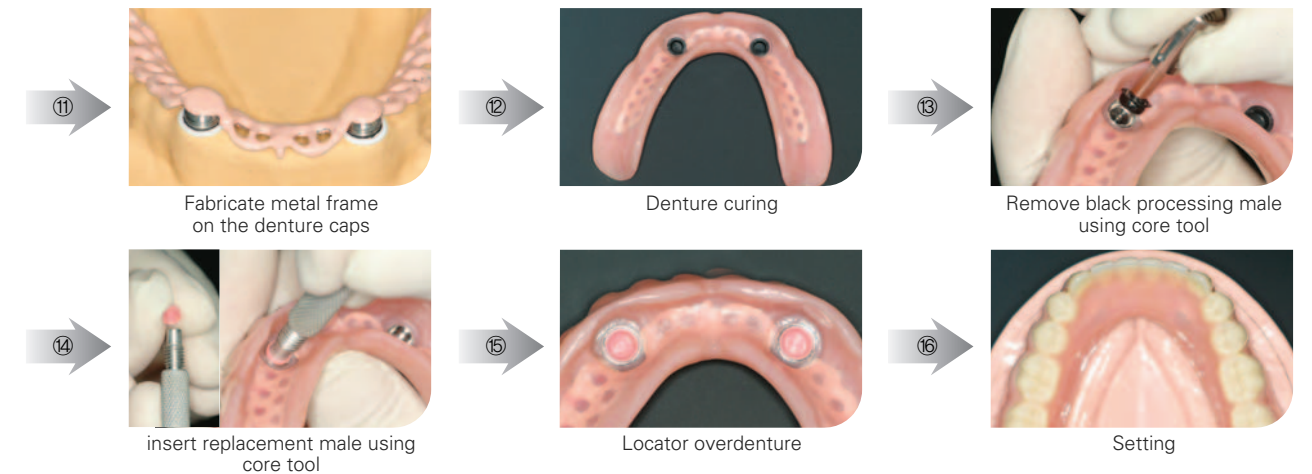
#### • Selecting the replacement males

In the case of implant divergences of more than 10° to 20°, using extended range replacement males (red or green) can give much retention and durability.

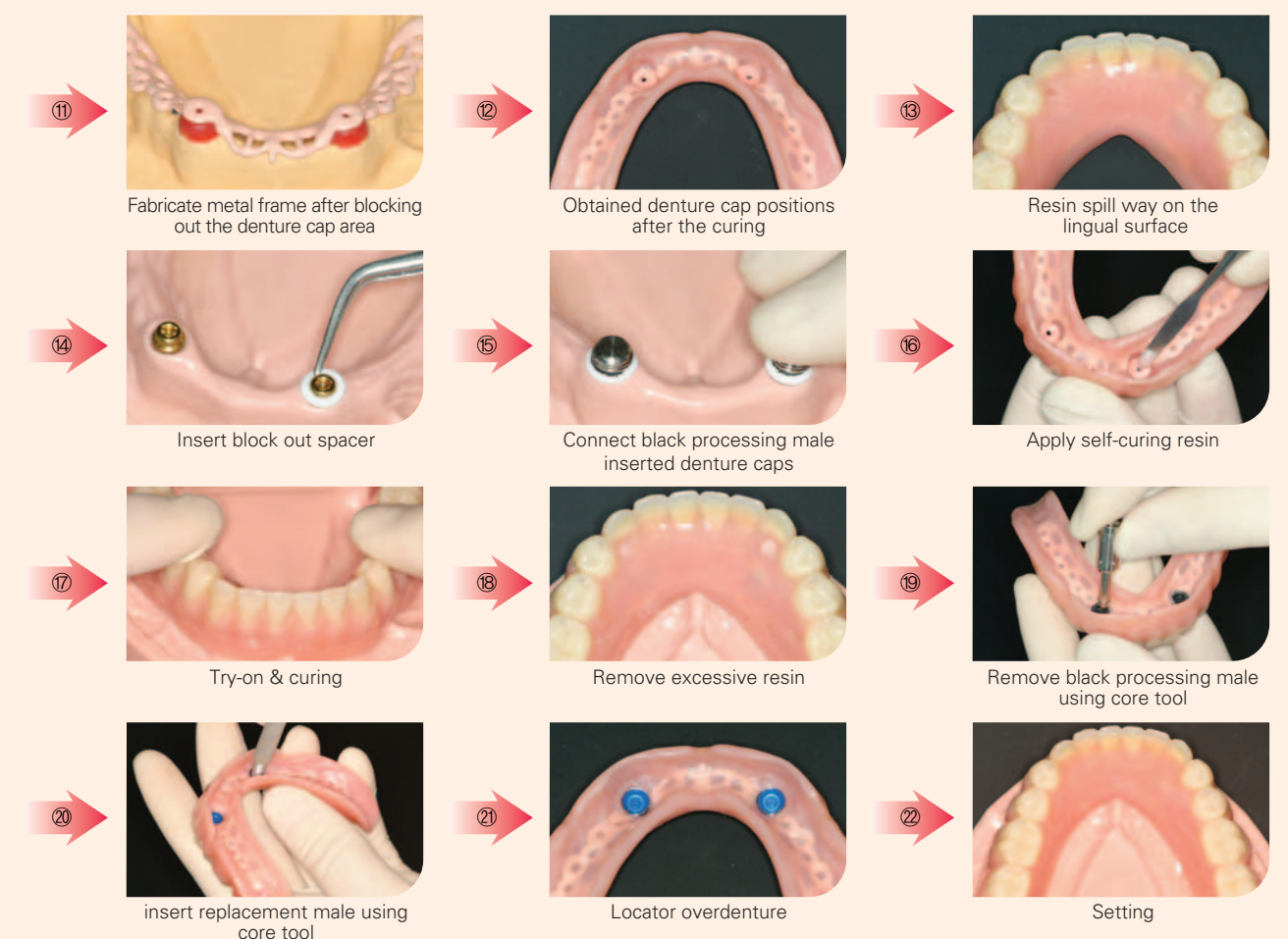
- When selecting males, it is recommended to use the Blue male (least retention) first. If the patients feels that they are too loose, then use the ones with greater retention force.

Blue → Pink → Clear

### ■ Curing denture & changing replacement males (Basic procedure)



### ■ Curing denture & changing replacement males (Intra-oral Technique)



● HIOSSEN LOCATOR® SYSTEM

■ Fixture level Impression

When using Hiossen fixture level impression components, It is also possible to take impression at the level of fixture without LOCATOR® abutment.

**HS System**

Pick-up    Transfer

Fixture Impression Coping    Fixture Lab Analog

**HG System**

Pick-up    Transfer

Fixture Impression Coping    Fixture Lab Analog

①

②

③

④

⑤

⑥

■ Using The LOCATOR® Core Tool

► When inserting replacement males into denture cap

► When tightening abutment by hand

► When removing replacement male from denture cap

① Unscrew the tip until the gap between the tip & the body is visible

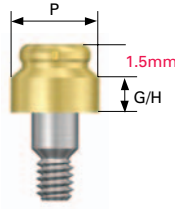
② Press on the male inside of denture cap with the tip and remove.

③ Twist the tip clock-wise until the male separates.

HS LOCATOR® Abutment

Regular

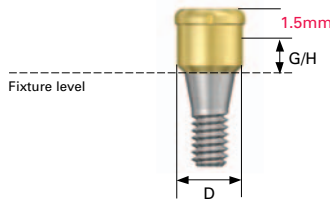
P :  $\varnothing 4.8$



| Platform x G/H                        | Code       |
|---------------------------------------|------------|
| $\varnothing 4.8 \times 0.7\text{mm}$ | HSLCA4810R |
| $\varnothing 4.8 \times 2.0\text{mm}$ | HSLCA4820R |
| $\varnothing 4.8 \times 3.0\text{mm}$ | HSLCA4830R |
| $\varnothing 4.8 \times 4.0\text{mm}$ | HSLCA4840R |

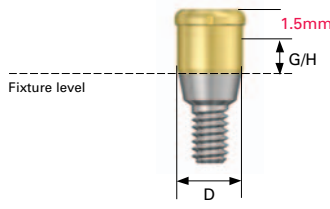
HG LOCATOR® Abutment

Mini



| Diameter x G/H                        | Code       |
|---------------------------------------|------------|
| $\varnothing 3.7 \times 1.0\text{mm}$ | HGLCA3510M |
| $\varnothing 3.7 \times 2.0\text{mm}$ | HGLCA3520M |
| $\varnothing 3.7 \times 3.0\text{mm}$ | HGLCA3530M |
| $\varnothing 3.7 \times 4.0\text{mm}$ | HGLCA3540M |
| $\varnothing 3.7 \times 5.0\text{mm}$ | HGLCA3550M |

Standard



| Diameter x G/H                        | Code       |
|---------------------------------------|------------|
| $\varnothing 3.7 \times 1.0\text{mm}$ | HGLCA4010S |
| $\varnothing 3.7 \times 2.0\text{mm}$ | HGLCA4020S |
| $\varnothing 3.7 \times 3.0\text{mm}$ | HGLCA4030S |
| $\varnothing 3.7 \times 4.0\text{mm}$ | HGLCA4040S |
| $\varnothing 3.7 \times 5.0\text{mm}$ | HGLCA4050S |

Component & Tool

**LOCATOR® Impression Coping (4Pack)**

LICS

**LOCATOR® Lab Analog (4Pack)**

LAL40S    LAL50S

**LOCATOR® Male Processing Kit (2Pack)**

LMPS

**LOCATOR® Replacement Male (4Pack)**

6N    12N    22N  
LRM06S    LRM12S    LRM22S

**LOCATOR® Extended Replacement Male (4Pack)**

6N    12N  
LEM06S    LEM12S

**LOCATOR® Black Processing Male (4Pack)**

LBPS

**LOCATOR® Block-out Spacers (20 pack)**

LBSS

**LOCATOR® Core Tool**

LCCT

**LOCATOR® Torque Driver**

TWLDL    TWLDS