

Monitor Osseointegration. Enhance decisions about when to load.

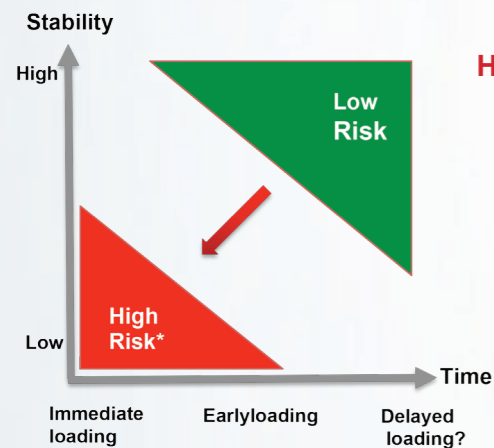
IS3™

- Reduces Treatment Time
- Manages Challenging Cases

HROSSEN®
IMPLANT

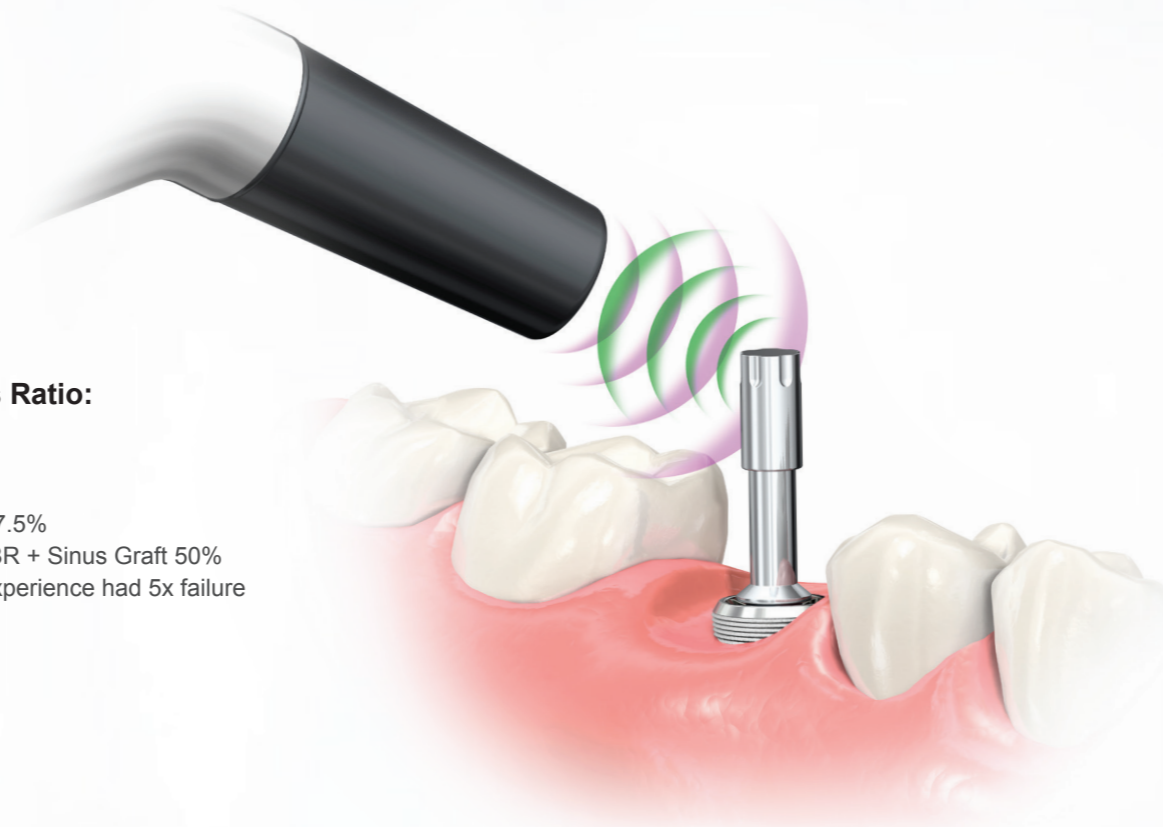
Guidance and Predictability

- Raise the implant success ratio with accurate diagnostic.
- Confidence to decide the optimal loading time.



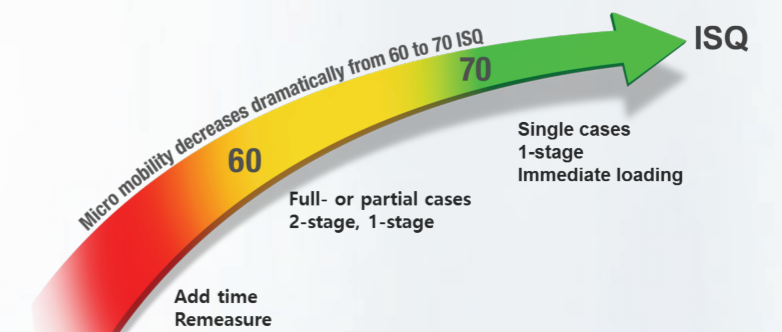
High Risk Area* Success Ratio:

- Bruxism 71.7%
- Diabetes 71.4%
- Immediate Loading 77.5%
- Iliac Crest Block + GBR + Sinus Graft 50%
- Surgeons <5 years experience had 5x failure



Optimized Patient Care

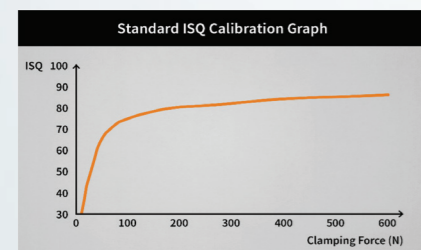
- Determines optimal loading protocol.
- The higher the ISQ Value, the higher the stability of the implant.



ISQ Standard Calibrated™

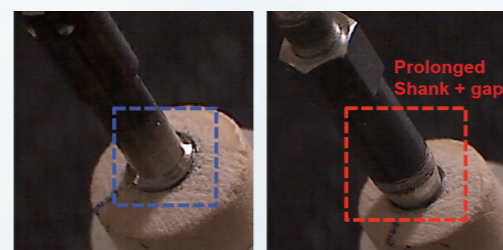
High Accuracy Measurement Results

Minimum Variance



*ISC International Standard Calibration

Optimal Physical Fit



IS3 Multipeg™ (#74) vs. Osstell Smartpeg™ (#50)

Reusable Multipeg™

- Up to 20 times without any deviation.
- Reusable, auto-clavable, calibrated, and compatible with all major implant systems.

Multipeg™ (Titanium)

- Reusable
- Auto-clavable
- Calibrated



Multipeg™ Driver

- Reusable
- Autoclavable
- Stainless Steel



Ease of Use

- Hand held instrument with single key operation.
- Clear numeric displays on both sides and long-lasting rechargeable batteries.

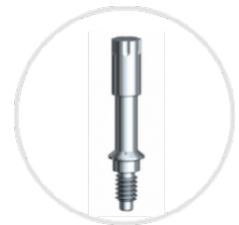


IS3™ System



Product System and Practical Use

The IS3™ system consists of a hand-held instrument and a reusable Multipeg™. A charger is delivered together with the instrument as well as a stainless steel driver for attaching the Multipeg™ to the implant.



STEP 1
Select the correct Multipeg™ for the implant being measured.

STEP 2
Attach the Multipeg™ Using the driver (approximately 6-8 Ncm of torque).



STEP 3
Turn on the instrument and hold the tip of the instrument close to the top of the Multipeg™.

STEP 4
The instrument emits a beeping sound when it starts measuring and another sound when the ISQ value is presented on the display a second later.



Multipeg™ Assortment

A

ADIN
AIRES
Alpha-Bio
Anker
Ankylos
Anthogyr
Argon
Astra Tech
Avinent

B

BEGO
BioHorizons
Biomet/3i
Bionnovation
Biotech Dental
BluSkyBio
Bredent
Bredent
BTI
BTK

C

Camlog
Conelog
C-Tech

D

Dentack
Dentegris
Dentium
DEVA
DIO

E

Easy Implant
Edierre

G

Global D
GMI

H

Hahn
Hiossen Implant

I

IDI Evolution
Implance
Implant Direct
Implant Swiss
Implantvision
Intra-lock

J

J Dental Care

K

Keystone
Klockner
Konmet

L

Lasak
Leader

M

Medentika
Megagen
MIS

N

Neo Biotech
Neodent
Neoss
Nobel Biocare
NucleOss

O

OCO Biomedical
Osstem

P

Paltop
Phibo
Prodent Italia

R

Resista

S

Schutz Dental
SIC
Southern Implants
Spiral Tech
Straumann
Sweden & Martina

T

Tag Dental
Thommen
TRI Dental implants

X

Xive

Z

Zimmer
Zuga