

IM-Cure KIT

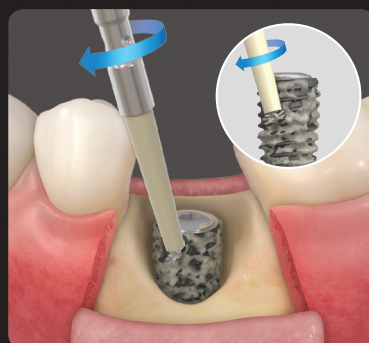
Eliminates Periodontitis with Multi-polishing Method

Step1. Macro-Polishing

SmartBrush1, 2

- Outstanding polishing ability by its design that fits the size of the Fixture threads
- Various brush types available for different cases

95%
eliminated



SmartBrush1

Used for dehiscence and horizontal bone loss



SmartBrush2

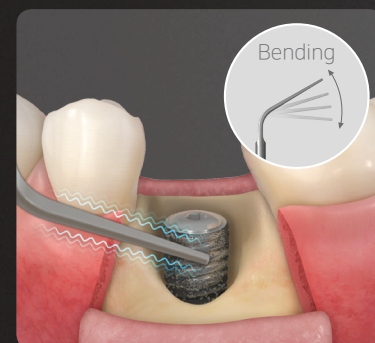
Used for vertical bone loss

Step2. Fine Polishing

SmartScaler-Metal

- Improved accessibility due to its flexible tip
- Metal scaler minimizes fixture surface damage

The remaining
5% eliminated



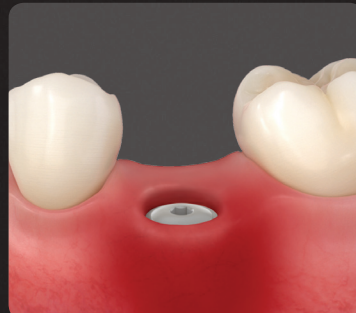
SmartScaler-Metal

Sequence

Removal of Peri-implantitis



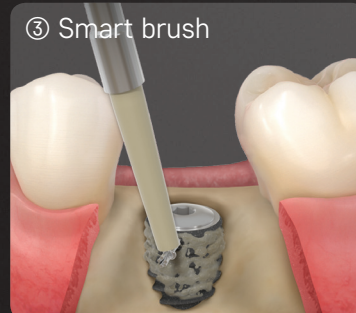
① Probe
Diagnose peri-implantitis with Probe



② Curette
Remove prosthesis and make gingival incision



③ Smart brush
Remove granulation tissue with Curette

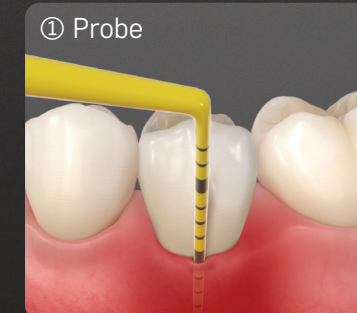


④ Smart scaler
Perform macro-polishing with Smart brush 1 and 2



Perform fine-polishing with Smart scaler-metal/plastic

Removal of Peri-mucositis



① Probe
Diagnose peri-mucositis with Probe



② Smart Scaler tip-plastic
Polish prosthesis with Smart scaler tip-plastic

IM-Cure Kit Component

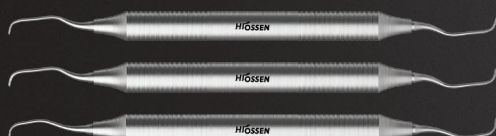
Probe (Metal/Plastic)

- Tool for probing gingiva and surroundings in order to diagnose periodontal diseases
- Metal : diagnose peri-implantitis
- Plastic : diagnose peri-mucositis
- Marking lines in 1mm units for accurate probing



Curette

- Used for removing subgingival sediment that are stuck hard to granulation tissue
- Used for removing plaque + subgingival sediment, and for performing root planning



Fine-Polishing

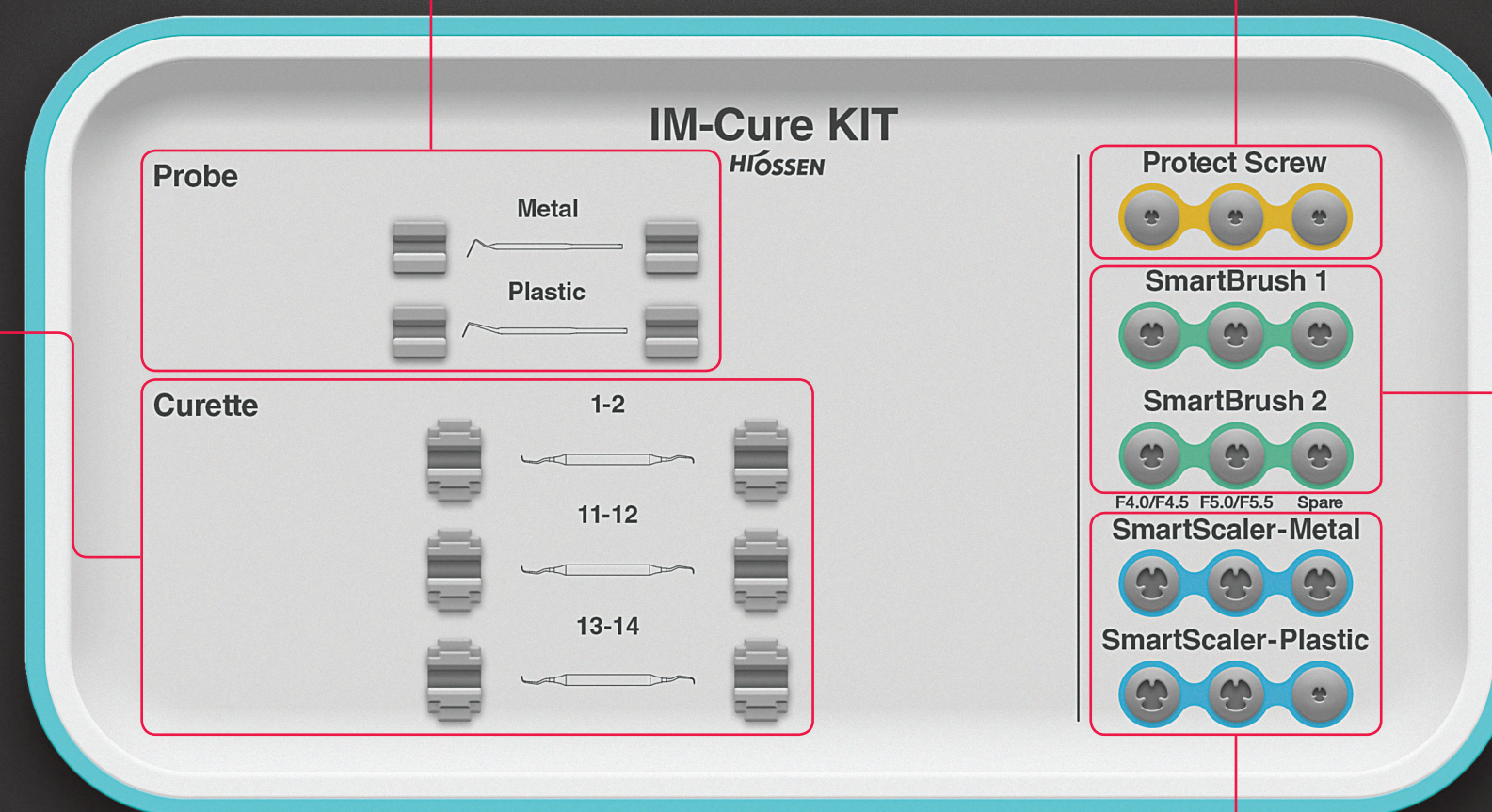
SmartScaler-Metal

- Fix to ultrasonic scaler in order to remove plaque or foreign substances from surface of Fixture
- Tip is bendable for better accessibility



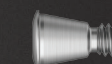
SmartScaler-Plastic

- Removes foreign substances from Abutment and crown
- ※ Prohibited to use for removing foreign substances on Fixture surfaces



Protect Screw

- Prevents foreign substances getting inside the fixture when using SmartBrush2
- Use 1.2 hex driver and deliver 5Ncm to Protect Screw



Macro-Polishing

SmartBrush1

- Used for cleaning off Peri-implantitis
- Used for cases of dehiscence and horizontal bone loss
- ※ Single use, re-use prohibited (please dispose after use)



SmartBrush2

- Used for cleaning off Peri-implantitis
- Used for cases of vertical bone loss
- ※ Single use, re-use prohibited (please dispose after use)

