

Fixed Denture Solution : Recover Biting Strength and Chewing Force with Only 4 Fixtures

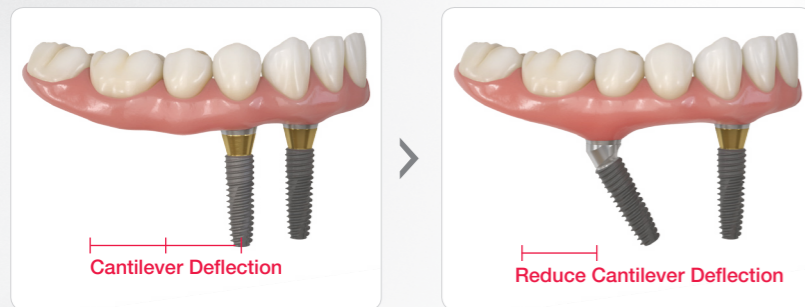
Denture 4U System

Full Arch Prosthesis is Possible with 4~6 Fixtures

- This system allows patients with severely resorbed alveolar bone to receive a stable full arch prosthesis treatment on just 4~6 fixtures
- Stable placement of fixtures in ordinary bone with sufficient height is also possible with the Denture 4U KIT (when using the 0° posterior guide)

Efficient Stress Distribution Achieved with Appropriate Angulation of the Fixtures

- Tilted fixtures with maximum 45° can reduce deflection of cantilever (Denture 4U KIT provides support for tilting the fixture up to maximum 30°)



Conventional Implant Denture

Denture 4U System



Stable Retention and Biting Strength Can be Secured Despite Severe Resorption of the Alveolar Bone

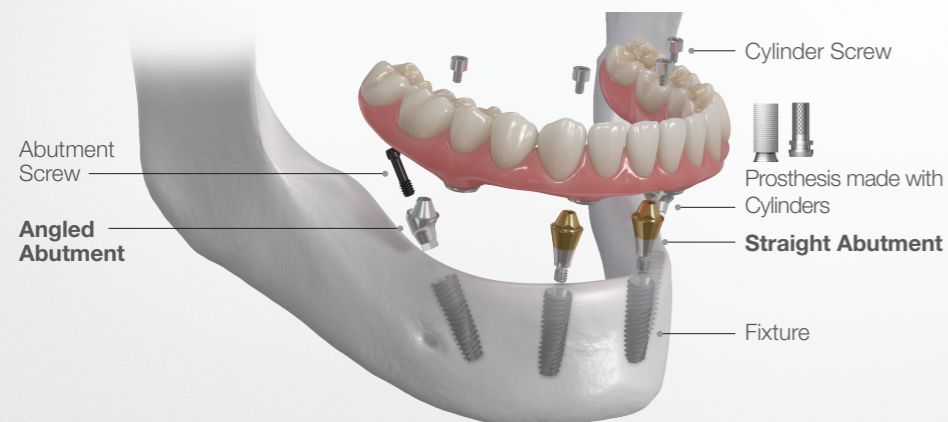
- More esthetic results by securing shape and volume of the Jawbone
- Prevents bone resorption and involution of edentulous patients or patients with conventional dentures

Semi-permanent Solution with Fixed Full-Denture

- Re-lining, replacement of abutments and other component : all unnecessary
- Greater patient satisfaction than conventional dentures

	Conventional Denture	Implant Denture	Denture 4U
# of Fixtures	-	6~10ea	4ea~
Removal	Removable	Removable	Fixed
Maintenance	Needs Re-lining	Needs Replacement of Components	Semi-Permanent

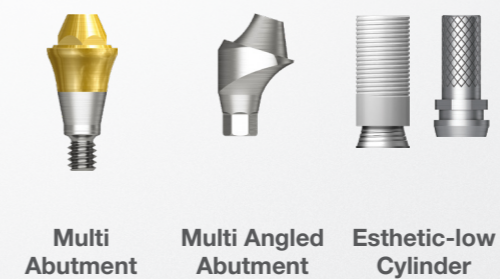
Line-up for Denture 4U Surgery



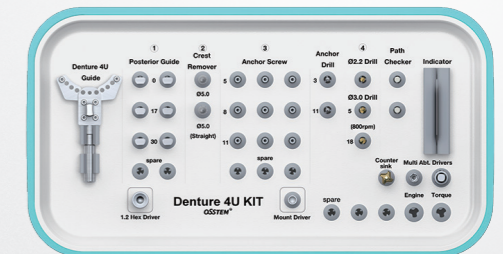
Fixture



Prosthetics



Denture 4U KIT



Denture 4U KIT

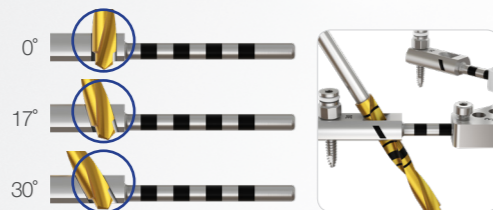
Accurate Surgery with Precision Guide Positioning

· Implants can be placed in the wished position and without damaging the alveolar nerve thanks to the KIT that allows adjustment of the implantation angle, Buccal/Lingual angulation and distance between fixtures

01

Adjustment of Implantation angle

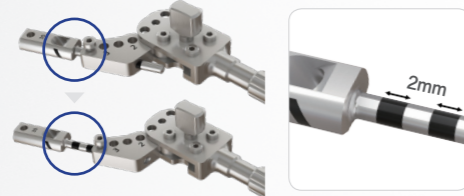
It is possible to readjust the Posterior guide, but taking CT before medical procedure is recommended to select better option in advance



02

Adjustment of the Distance between Implants

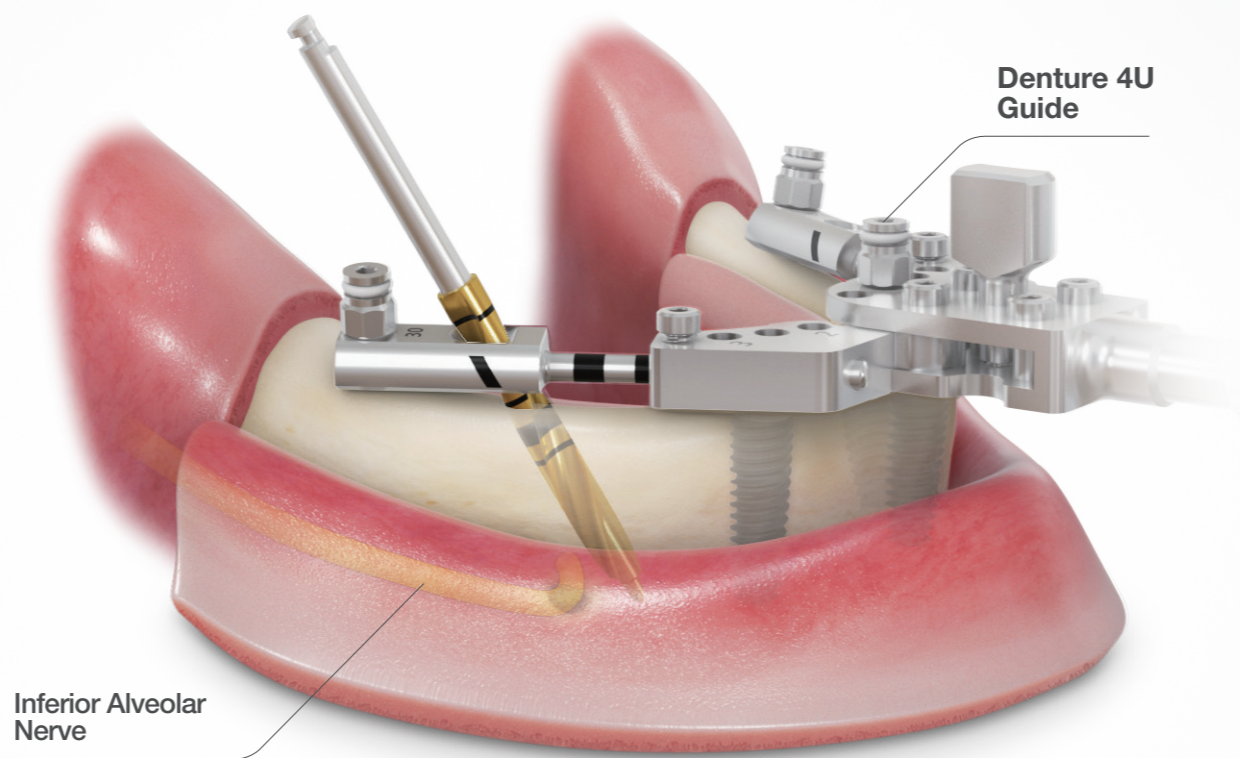
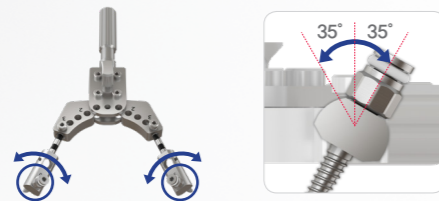
Consider of planting distance - posterior guide (Laser Marking : 2mm units)



03

Adjustment of the Buccal/Lingual Angulation

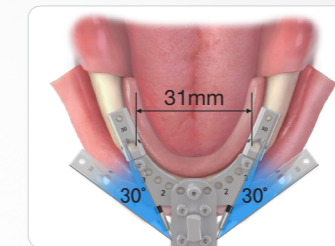
Buccal / Lingual angulation is possible up to ±35°



Accurate and Safe Denture 4U Surgery with Denture 4U KIT

Can be Used in Various Clinical Cases

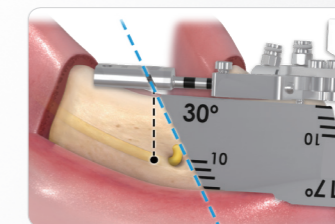
· The guide can be freely adjusted, allowing stable positioning and surgery guidance even in cases with asymmetric dental arches and irregularly shaped arches



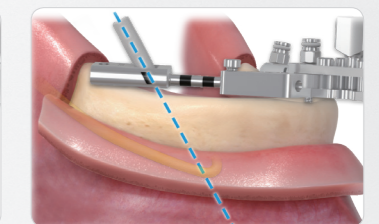
■ : Range for Drilling

Safe Surgery Without Nerve Damage

· Safe surgery is possible by checking the location of the inferior alveolar nerve with indicator and path checker



Surgery with full flap



Surgery with general flap

Surgical Sequence ※ It's up to the clinician's decision whether to begin with the anterior or posterior region

※ Refer to a brochure for details of technique, prosthetics manual and Denture 4U System

- Check median line by referring to labial frenum or facial and dental midline
- 1-point fixation In anterior region
- Adjust the guide for anterior/posterior arch (Implant distance, B/L angulation)
- Check location of mental foramen (using Indicator and Path Checker)
- 2-point fixation in posterior region
- Drilling (Ø3.0) in posterior region
- Drilling (Ø2.2) In anterior region
※ Drilling after Re-adjustment of the arch may be performed if necessary
- Countersink drilling in order to prevent interference from drill stoppers and dental prosthesis
- Perform drilling with Taper KIT or 122 Taper KIT to enlarge and finalize drill hole